

Additional information can be obtained at nauticalcharts.noaa.gov

BADAR REFLECTORS

Radar reflectors have been placed on many floating aids to navigation. Individual radar reflector identification on these aids has been omitted from this chart.

CAUTION

Temporary changes or defects in aids to navigation are not indicated on this chart. See Local Notice to Mariners.

During some winter months or when endangered by ice, certain aids to navigation are replaced by other types or removed. For details see U.S. Coast Guard Light List.

navigation and insured vessels, both in uncharted locations. Charted soundings, channel depths and shoreline may not reflect actual conditions following these storms. Fixed aids to navigation may have been damaged or destroyed. Buoyage may have been moved from their charted position, extinguished or otherwise made inoperative. Mariners should not rely upon the position or operation of aids to navigation. Wrecks and submerged obstructions may have been discovered from digital locations. Pipelines may have been uncovered or moved. Mariners are urged to exercise extreme caution and are requested to report aids to navigation discrepancies and obstructions to the nearest United States Coast Guard cutter or buoy tender.

Chart changes in the same sequence as indicated by the color and the extension is recommended. If a change is made, the extension is recommended. If a change is made, the extension is recommended. If a change is made, the extension is recommended.

Chart changes in the same sequence as indicated by the color and the extension is recommended. If a change is made, the extension is recommended. If a change is made, the extension is recommended.

Chart changes in the same sequence as indicated by the color and the extension is recommended. If a change is made, the extension is recommended. If a change is made, the extension is recommended.

Chart changes in the same sequence as indicated by the color and the extension is recommended. If a change is made, the extension is recommended. If a change is made, the extension is recommended.

Chart changes in the same sequence as indicated by the color and the extension is recommended. If a change is made, the extension is recommended. If a change is made, the extension is recommended.

Chart changes in the same sequence as indicated by the color and the extension is recommended. If a change is made, the extension is recommended. If a change is made, the extension is recommended.

Chart changes in the same sequence as indicated by the color and the extension is recommended. If a change is made, the extension is recommended. If a change is made, the extension is recommended.

Chart changes in the same sequence as indicated by the color and the extension is recommended. If a change is made, the extension is recommended. If a change is made, the extension is recommended.

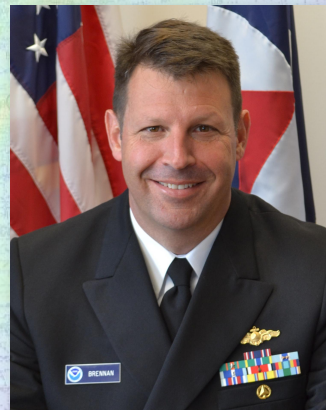
FY26

Rear Admiral

Richard T. Brennan

Ocean Mapping Fund

Informational Webinar



In honor of RDML Richard T. Brennan

We will start at 1pm E.T.

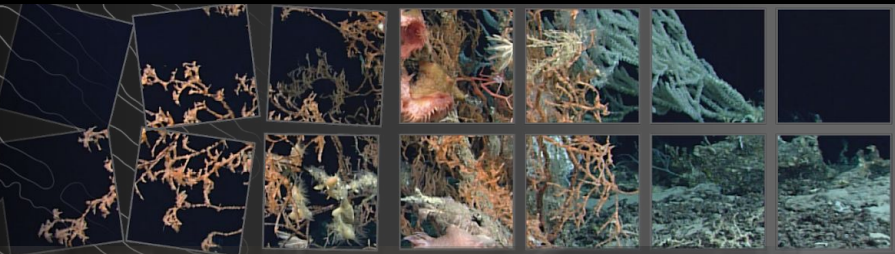
Meredith Westington

Integrated Ocean and Coastal Mapping

Christy Fandel

Chief, Operations Branch, Hydrographic Surveys Division

Seminar Logistics



- ❑ We encourage you to share input and feedback using the webinar and email:
 - ❑ We will be recording; attendees or their likeness will not be posted
 - ❑ Use “Questions” function to write your questions.
 - ❑ When submitting a question, please let us know if you would like to speak and we will unmute you. We will hold questions for the Q&A portion.
 - ❑ You can email us at iwgocm.staff@noaa.gov for any follow-up questions.
 - ❑ If you are having technical difficulties, please contact Amber Butler at amber.butler@noaa.gov.

RADAR REFLECTORS
Radar reflectors have been placed on many floating aids to navigation. Individual radar reflector identification on these aids has been omitted from this chart.

CAUTION
Temporary changes or defects in aids to navigation are not indicated on this chart. See Local Notice to Mariners.

During some winter months or when endangered by ice, certain aids to navigation are replaced by other types or removed. For details see U.S. Coast Guard Light List.

Fixed aids to navigation may have been damaged or destroyed. Buoys may have been moved from their charted positions, damaged, sunk, extinguished or otherwise made inoperative. Mariners should not rely upon the position or operation of an aid to navigation. Wrecks and submerged obstructions may have been displaced from charted locations. Pipelines may have become uncovered or moved.

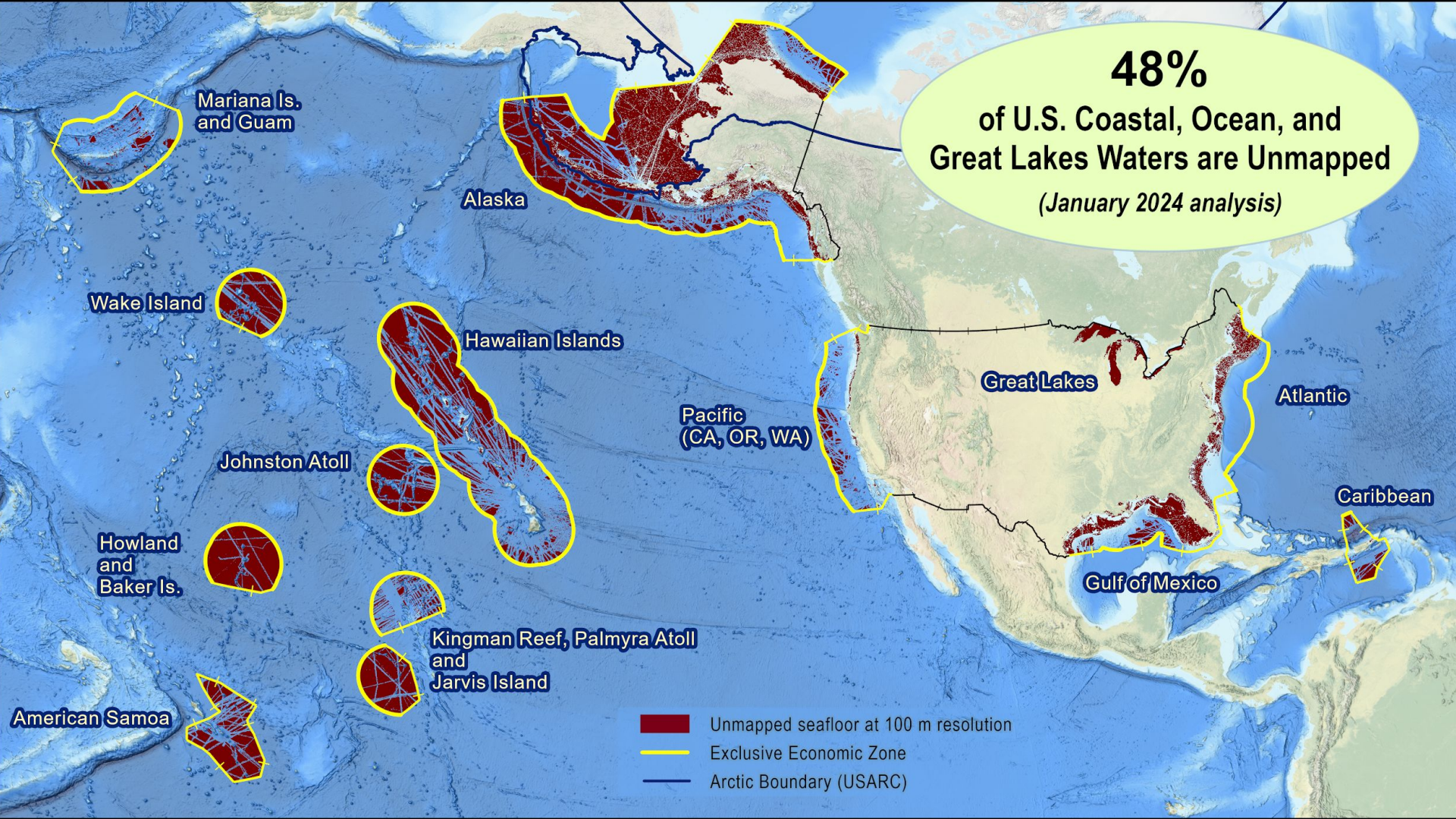
Mariners are urged to exercise extreme caution and are requested to report aids to navigation discrepancies and hazards to navigation to the nearest United States Coast Guard unit.

MAGNETIC VARIATION
Magnetic variation curves are for 2015 derived from 2015 World Magnetic Model and incorporating secular change. It is assumed that the variation is increasing. If actual change is opposite in direction to variation it is subtractive and the variation is decreasing.

Rear Admiral Richard T. Brennan



48%
of U.S. Coastal, Ocean, and
Great Lakes Waters are Unmapped
(January 2024 analysis)



Mariana Is.
and Guam

Alaska

Wake Island

Hawaiian Islands

Pacific
(CA, OR, WA)

Great Lakes

Atlantic

Johnston Atoll

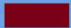


Howland
and
Baker Is.

Caribbean

Kingman Reef, Palmyra Atoll
and
Jarvis Island

Gulf of Mexico

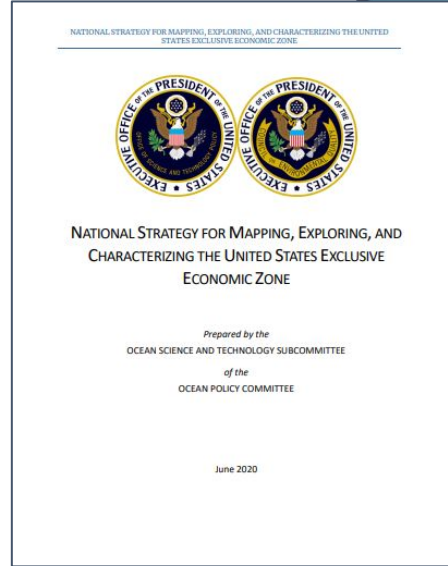
American Samoa

-  Unmapped seafloor at 100 m resolution
-  Exclusive Economic Zone
-  Arctic Boundary (USARC)

Map Once, Use Many Times



MAPPING THE COAST OF ALASKA
A 10-Year Strategy in Support of the United States Economy, Security, and Environment



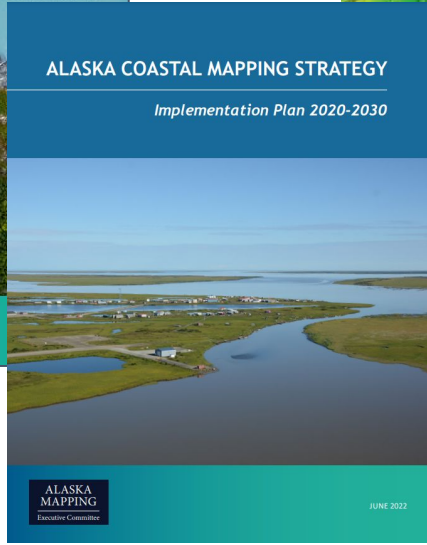
NATIONAL STRATEGY FOR MAPPING, EXPLORING, AND CHARACTERIZING THE UNITED STATES EXCLUSIVE ECONOMIC ZONE



NATIONAL STRATEGY FOR MAPPING, EXPLORING, AND CHARACTERIZING THE UNITED STATES EXCLUSIVE ECONOMIC ZONE

Prepared by the
OCEAN SCIENCE AND TECHNOLOGY SUBCOMMITTEE
of the
OCEAN POLICY COMMITTEE

June 2020



ALASKA COASTAL MAPPING STRATEGY
Implementation Plan 2020-2030

ALASKA
MAPPING
Executive Committee

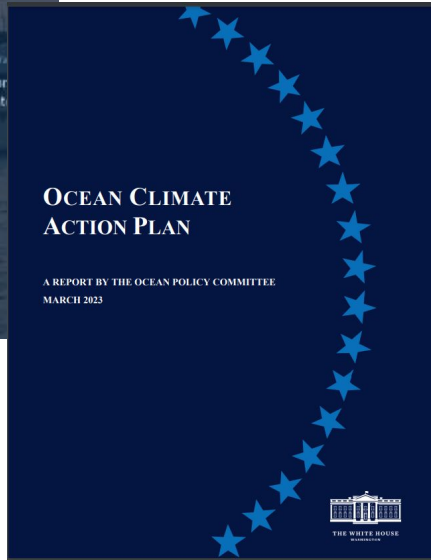
JUNE 2022



Mapping U.S. Marine and Great Lakes Waters
Office of Coast Survey Contribution
to a National Ocean Mapping Strategy

July 2020

Office of Coast Survey
National Oceanic and Atmospheric Administration



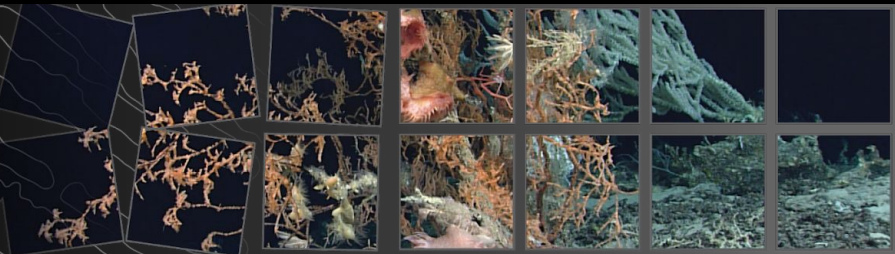
OCEAN CLIMATE
ACTION PLAN

A REPORT BY THE OCEAN POLICY COMMITTEE
MARCH 2023



<https://iocm.noaa.gov/about/strategic-plans.html>

Matching Fund in Brief



GOALS

- ❑ Leverage NOAA and non-Federal partner funds to acquire more ocean and coastal mapping data collected by qualified contract surveyors during FY 2026
- ❑ Increase hydrographic surveying and coastal mapping to support:
 - ❑ Safer navigation
 - ❑ Hazard mitigation for coastal resilience
 - ❑ Preservation of marine habitats and heritage
 - ❑ Coastal and ocean science
 - ❑ Deeper understanding of natural resources for sustainable ocean economies
 - ❑ **MANY** other activities

What's New for FY26?



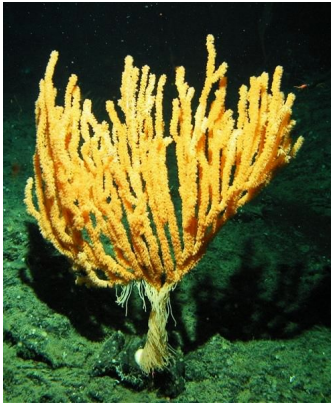
- ❑ 48% of U.S. waters are considered unmapped
- ❑ Updated resource documents
 - ❑ *Hydrographic Surveys Specifications and Deliverables:*
<https://nauticalcharts.noaa.gov/publications/standards-and-requirements.html> (updated)
 - ❑ *NOAA's Equitable Climate Services Action Plan:*
<https://www.noaa.gov/sites/default/files/2024-04/NOAA-ECSAP-Final.pdf> (new!)

NOAA ships Fairweather and Rainier, photo by NOAA



Areas of Focus

For this opportunity, proposals will be considered that are aligned with national priorities for climate and infrastructure, and the goals of the NOMECS, ACMS, and the Coast Survey Ocean Mapping Plan



- A. Map the United States Exclusive Economic Zone (EEZ)**
- B. Expand Alaska Coastal Data Collection to Deliver the Priority Geospatial Products Stakeholders Require**
- C. Expand coastal mapping to inform science-based decision-making capabilities**

Tools to Use



United States Interagency Elevation Inventory

IDENTIFY BASEMAP SHARE

ZOOM TO STATE/TERRITORY

ZOOM TO COUNTY/ISLAND

U.S. Mapping Coordination
A Collaboration Site for Mapping Data Acquisition

seasketch

Data Layers My Plans Participa

Data Layers Basemap Legend & Ordering

My Map

Open in Map Viewer Modify Map Sign In

Print Measure Find address or place

Contents

Planned Survey Areas

OCS Survey Plans

- 2000
- 2001
- 2002
- 2003
- 2004
- 2005
- 2026

Topographic

1:36,978,595.47

United States Department of Commerce

Estn. GEBCO. IHO-IGBC GEBCO. DelDem

NOAA National Bathymetric Source Data

[bathymetry](#) [earth observation](#) [marine navigation](#) [model](#) [oceans](#) [oceans](#)

Description

The National Bathymetric Source (NBS) project creates and maintains high-resolution bathymetry composed of the best available data. This project enables the creation of next-generation nautical charts while also providing support for modeling, industry, science, regulation, and public curiosity. Primary sources of bathymetry include NOAA and U.S. Army Corps of Engineers hydrographic surveys and topographic bathymetry (topo-bathy) lidar (light detection and ranging) data. Data submitted through the NOAA Office of Coast Survey's external source data process are also included, with gaps in deep water filled through Global Multi-Resolution Topography, a merged model of bathymetry. Different vertical datums and file formats are made available to meet various uses. The BlueTopo folder includes multilayer floating point GeoTIFFs with associated Raster Attribute Tables (RAT) containing elevation, vertical uncertainty, with other quality metrics and source information. These files are arranged in a tiling, naming, and resolution scheme corresponding to the Electronic Navigational Chart (ENC) but are not for navigation due to the inclusion of additional non-navigation data and non-navigation vertical datums. For navigational datasets please see the S-102 distribution portal. In the future "nowCOAST" will provide to the public web mapping services for the BlueTopo products.

Resources on AWS

Description
NOAA National Bathymetric Source Data

Resource type
S3 Bucket

Amazon Resource Name (ARN)
`arn:aws:s3:::noaa-ocs-nationalbathymetry-pds`

AWS Region
`us-east-1`

AWS CLI Access (No AWS account required)
`aws s3 ls --no-sign-request s3://noaa-ocs-nationalbathymetry-pds/`

Explore
[Browse Bucket](#)



HYDROGRAPHIC SURVEYS SPECIFICATIONS AND DELIVERABLES

May 2020

S-44 Edition 6.0.0

International Hydrographic Organization
Standards for Hydrographic Surveys

IHO

Published by the
International Hydrographic Organization
40, Quai d'Albion 1^{er}
F-93200 La Plaine
Tel: (33) 1 57 10 81 00
Fax: (33) 1 57 10 81 40
info@iho.int
www.iho.int

**Mapping Data Acquisition
Cost Estimation Sheet**
Email iwgocm.staff@noaa.gov

Eligibility

- ❑ Non-Federal entities. Examples:
 - ❑ State/local governments
 - ❑ Tribal entities
 - ❑ Universities/academia
 - ❑ Private sector
 - ❑ NGOs/philanthropic orgs
 - ❑ Coalitions of non-federal entities

- ❑ Qualifying proposals must demonstrate the ability to provide at least **30%** matching funds, for transfer to NOAA by **September 2025** via memorandum of agreement



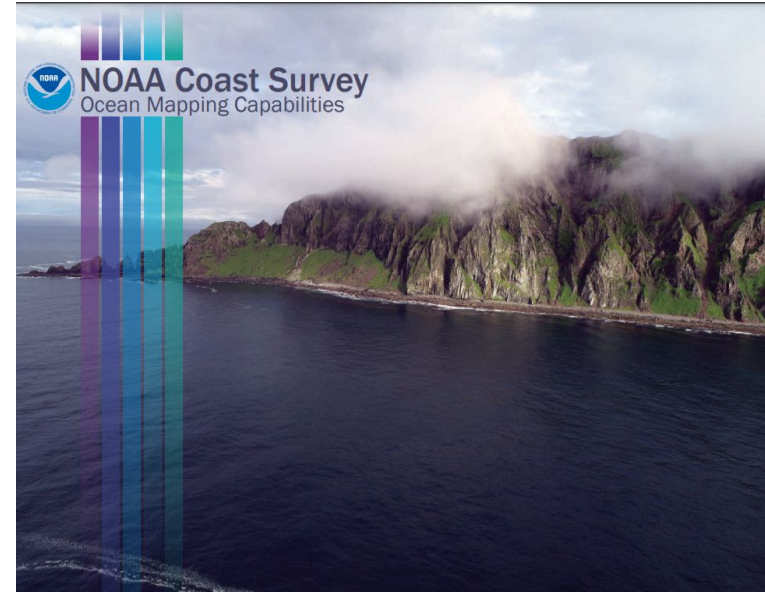
Port Valdez Marina, located near a Brennan Matching Fund Opportunity mapping site



Long Island Sound lighthouse, located near a Brennan Matching Fund Opportunity mapping site

What NOAA Brings

- ❑ Hydrographic surveying and shoreline mapping expertise
- ❑ **70%** match
- ❑ 33 U.S.C. 883e authority to receive funds
- ❑ Value-added contract management and oversight
- ❑ Survey compliance
- ❑ Survey/control and correction/calibration services
- ❑ Data processing, quality assessment and review of all acquired hydrographic data
- ❑ Data management and stewardship from ping to hi-res products to archive at NOAA National Centers for Environmental Information

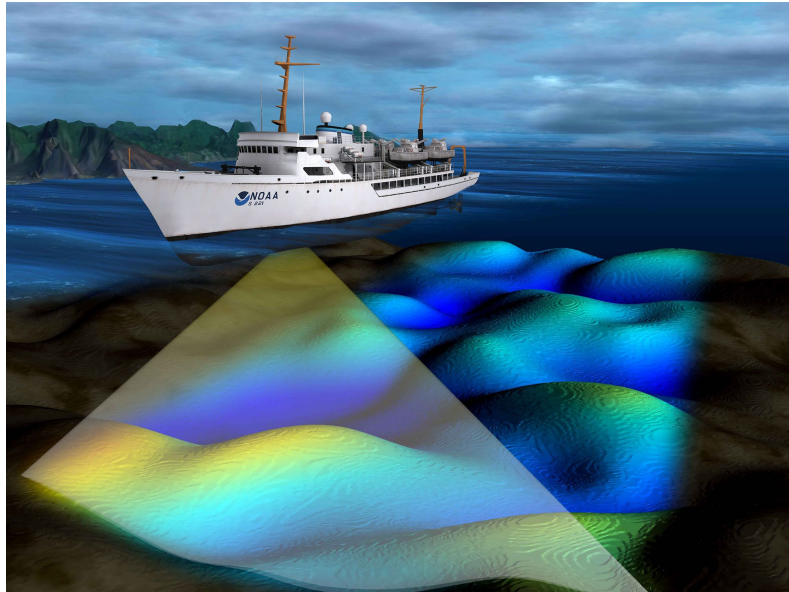


<https://nauticalcharts.noaa.gov/about/docs/about/ocean-mapping-capabilities.pdf>

Products



Potential products include, but not limited to:



- ❑ Bathymetric data (multibeam, single beam, lidar)
- ❑ Backscatter
- ❑ Water column (depth dependent)
- ❑ Side scan sonar imagery
- ❑ Feature detection reports
- ❑ Sensor/data corrections and calibrations (e.g., conductivity, temperature and depth casts)
- ❑ Survey and control services, including the installation, operation, and removal of water level and Global Positioning System stations
- ❑ Data processing, quality assessment and review of all acquired hydrographic data
- ❑ Data management and stewardship through data archive at the National Centers for Environmental Information
- ❑ High-resolution topographic/bathymetric product generation

How Mapping is Executed



Geospatial Contract Vehicles

A number of federal agencies have geospatial contract vehicles that are available for use by other agencies and partners. A memorandum of agreement must be signed detailing the partnership, but once that is accomplished, the partner benefits from the expertise these agencies have and managing an acquiring ocean and coastal mapping data with the private sector.

Hydrographic Surveying Services: NOAA's Coast Survey manages the contract vehicle for hydrographic data, including multibeam sounding data, side scan sonar, acoustic backscatter, processing of the data, quality control, and resulting products

Shoreline Mapping Support Services: NOAA's National Geodetic Survey manages this contract for remote-sensing, digital shoreline mapping, surveying, and associated tasks. Services include planning, collecting remotely since data from ground, aircraft, and/or satellite based sensors, conducting geodetic surveys, determining tidal datums, and digital map compilation.

Coastal Geospatial Services: NOAA's Office of Coastal Management manages this contract for geospatial services. Services include lidar and imagery data acquisition, high-resolution topographic and/or bathymetric product generation, thematic mapping, survey and control services and training, and geospatial data management, integration, modeling, and visualization.

Funding Availability & Project Period

Coast Survey and the National Geodetic Survey anticipate funding up to five survey projects at a 70% match of up to \$1 million per project. All projects are expected to have an FY2026 project start date and all non-Federal partner matching funds must be received by NOAA in September 2025. NOAA intends to complete each selected project within two (2) years.



Deadlines and Dates

To: iwgocm.staff@noaa.gov

- ❑ **September 13th, 2024:** Option to schedule a 30 minute “office hours” one-on-one session to validate proposals
- ❑ **October 11th, 2024:** Due date for proposals, statements of interest regarding potential future proposals, and all supporting GIS files
- ❑ **November 18, 2024:** NOAA issues its decisions on proposals
- ❑ **December 2024 - January 2025:** NOAA works with selected partners to develop memoranda of agreement to facilitate the transfer of funds from the non-Federal partner to NOAA
- ❑ **March 2025:** NOAA finalizes the memoranda of agreement with partners
- ❑ **June-September 2025:** Non-Federal partners transfer matching funds to NOAA; funds must be available to NOAA for contracting in October 2025
- ❑ **January-September 2026:** NOAA issues task orders to its established survey contractors for NOAA/partner FY26 projects



Submission Requirements



Six (6) total pages (plus optional GIS files of project areas) and the following **three** components:

- 1.** A project title; executive summary (3-5 sentences); and the names, affiliations, and roles of the project partners and any co-investigators, as well as the project lead that will serve as primary contact (1 page maximum).
- 2.** A justification and statement of need; description and graphics of the proposed survey area, including relevance to the strategic areas of focus noted in Section III and degree of flexibility on timing of survey effort (4 pages maximum).
- 3.** A project budget that lists the source(s) and amount(s) of funding that the partner would provide as its match to NOAA. Budget must confirm that partner funds can be transferred to NOAA by September 2025 (1 page maximum).

Evaluation Criteria

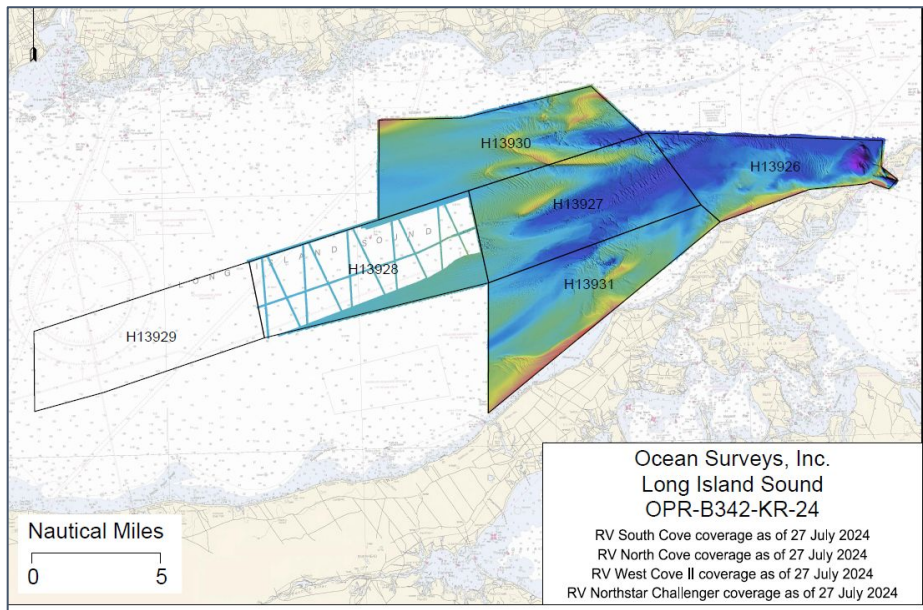


Proposals will be evaluated by the Brennan Matching Fund Program Management Team.

E.g., does the proposal have:

- Intrinsic IOCM value and/or relevance to NOAA missions and priorities?
- Clear need, anticipated outcomes, public benefit?
- POC and partners identified? Funding sources identified?
- Realistic proposed budget?
- Feasibility, flexibility?

Current BMF Projects



FY24: NOAA partnering with Connecticut Dept of Energy and Environmental Protection—\$1.8M



FY25: NOAA partnering with City of Valdez for hazard detection and planning

Questions?

We want to hear from you!

Interested, but the timing doesn't work? You'd consider submitting a proposal in future?

One page letter of interest:

Tell us what your timing hurdles are, where/what you are interested in, potential partners if more time, etc.

If you have outstanding questions, you can also join us for **office hours on September 13** by emailing iwgocm.staff@noaa.gov

Contact information

Proposals must be submitted in PDF format via email to:

iwgocm.staff@noaa.gov

by **5pm ET, October 11, 2024**

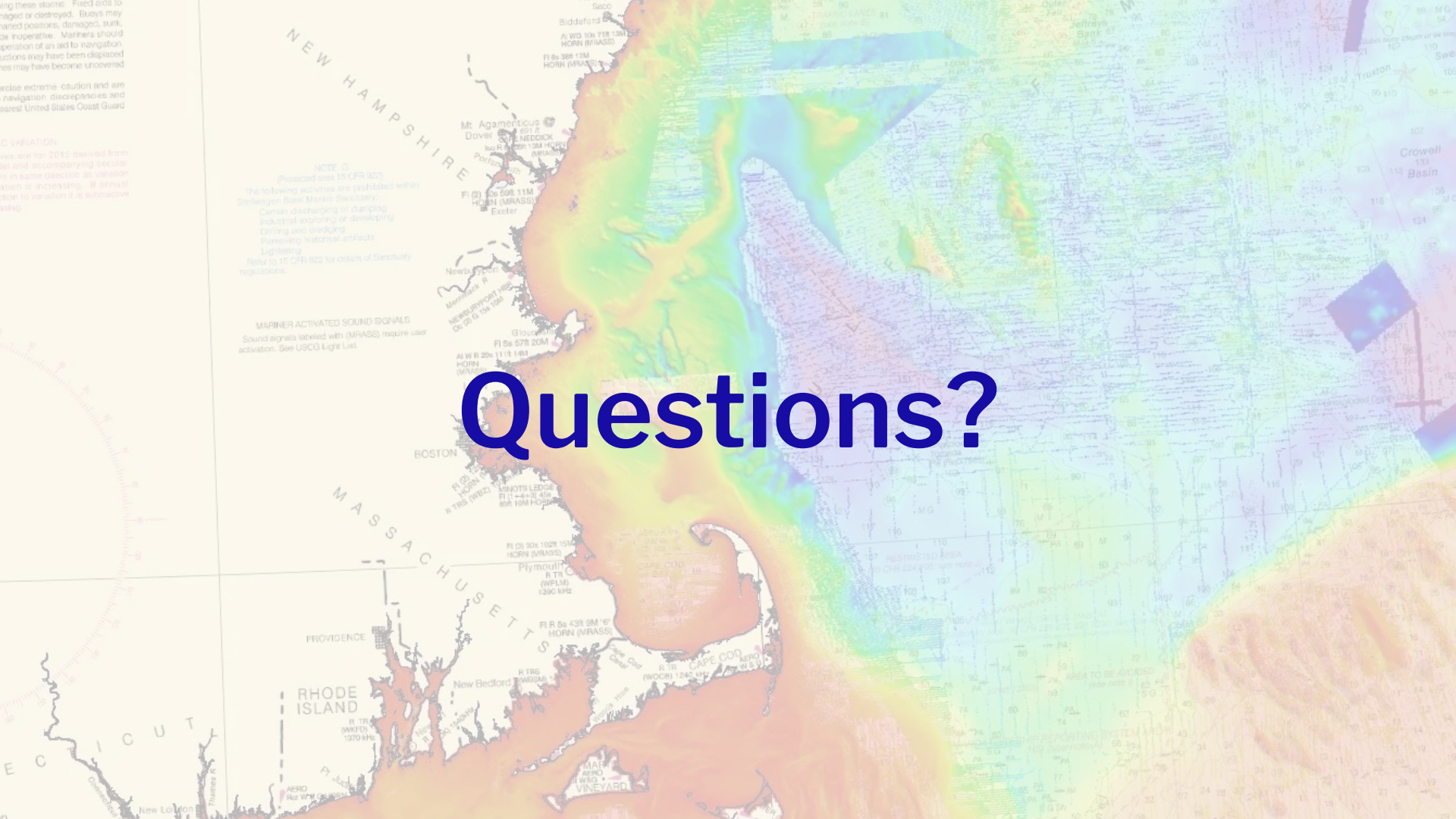
FOR FURTHER INFORMATION CONTACT:

Integrated Ocean and Coastal Mapping at iwgocm.staff@noaa.gov

or

Meredith Westington at meredith.westington@noaa.gov

Paul Turner at paul.turner@noaa.gov



...aged or destroyed. Flashed aids may be inoperative. Mariners should exercise extreme caution and are advised to report any discrepancies to the nearest United States Coast Guard cutter.

...IC VARIATION
...derived from
...secular
...annual
...is additive

NOTE: C
Prescribed uses 15 CFR 902
The following activities are prohibited within
Deduxen Bank Marine Sanctuary:
Cannon discharging or dumping
Industrial exploring or dumping
Drilling and fracking
Removing historical artifacts
Lighting
Refer to 15 CFR 902 for details of Sanctuary
regulations.

MAPINER ACTIVATED SOUND SIGNALS
Sound signals labeled with (MRASS) require user
activation. See USCG Light List.

Questions?